

# ISLAND BEACH STATE PARK

## VISITOR'S GUIDE 2024

Brought to you by



**FRIENDS**  
OF  
ISLAND BEACH  
STATE PARK



Funded in part by a grant from the  
Ocean County Board of Commissioners  
Explore more at  
[OceanCountyTourism.com](https://www.OceanCountyTourism.com)



# WELCOME

Welcome to the 2024 season at Island Beach State Park!

Its been a busy year here at Island Beach State Park! Park staff have been working tirelessly to make improvements throughout the park to enhance your experience, preserve natural resources and showcase this unique environment.

We are thrilled to report that the sewer line project is officially complete! All restroom facilities are now connected to the sanitary sewer system (except for the outhouses at A13 and A19) and the antiquated septic fields have been decommissioned. In addition, part of the sewer line project included the construction of 2 new lift/pump stations. You will notice these beautiful new buildings at the maintenance lot and at the park office.

As you enter the park, take notice of the newly striped and paved roadway and trust that we are making a more concerted effort this season to keep the vegetation cut back, and to keep sand off the road shoulder. These efforts will help create a safer environment for vehicular, bicycle and pedestrian traffic.

Be sure to stop by the Nature and Interpretive Center, located 7 miles South of the park entrance. Park staff and the Friends of IBSP have been working all winter to create new exhibits and activities for kids and adults! Also check out the exciting summer programs we offer at [www.islandbeachnatureprograms.org](http://www.islandbeachnatureprograms.org).

While you are here, we encourage you to visit our unspoiled beaches, kayak the crystal clear waters of the Sedge Islands Marine Conservation Zone, or hike to the bird blinds to observe NJ's largest breeding Osprey population. Take a moment to immerse yourself in the parks natural beauty and rich history. We promise you won't be disappointed!

Thanks again for visiting and if there is anything we can do to make your time here more enjoyable, please let us know!



ISLAND BEACH STATE PARK

— Background Photo by Nancy Hannah



# PLAN YOUR VISIT



## HOURS

### Memorial Day – Labor Day

Weekdays 8 a.m. – 8 p.m.

Weekend/Holiday 7 a.m. – 8 p.m.

### Labor Day – Memorial Day

Everyday 8 a.m. – sunset



## FEES

Fees will be charged this season. Please check [njparksandforests.org](http://njparksandforests.org) for information.



## PETS

- Must be on a leash no greater than 6 ft.
- Not permitted on Lifeguarded beaches.
- Not permitted on Spizzle Creek Trail.
- Not permitted on Bird Blinds.



## SWIMMING

- Lifeguards on duty 10 a.m. – 6 p.m.
- Weekends beginning May 25
- Daily beginning June 15
- Swimming Area 2 opens June 15
- Flotation devices are not permitted

**NO SWIMMING IF LIFEGUARDS ARE NOT ON DUTY**



## BIKING

- All children under 14 must wear helmet
- Cycling is permitted within the road shoulder single file.



## TIDES

Ocean Tides

Bay Tides



## Keep your Park Clean & Green

Please bring your trash home with you when possible. Dumpsters are located at Swimming Area 1 & 2, Parking Lots A7 & A23



## WEATHER

IBSP has a weather station! Click QR code for up to date, local weather forecast



# PLAN YOUR VISIT



## PICKNICKING

- Picnicking is permitted on the Ocean beach anywhere from the Swimming Areas south to the jetty
- No cooking devices are permitted on Lifeguarded beaches.
- Picnic tables are available at the Nature center.



## RESTROOMS

- Gatehouse
- Swimming Area 1 & 2
- Nature Center
- A6, A13, A19, A21



## SURFING, SCUBA, WINDSURFING

- Surfing permitted south of the Swimming Areas.
- Scuba diving permitted south of the Swimming Areas with valid certification. Must register at the Park Office.
- Windsurfing permitted only at the south end of the lifeguarded area.
- Other water craft is NOT permitted on the ocean side – Bay side only.



## HORSEBACK RIDING

- Horseback riding permitted October to April on southern 6 miles of Ocean Beach.
- Reservations required.
- Must clean up after horses.



## MOBILE SPORT FISHING

- Mobile sport fishing Vehicle permits are sold out for 2024.
- Additional permits will be available October 1, 2024 for the Fall Fishing Run.
- Air stations located at Park Office and Parking lot A6/A7.



## KAYAKING

- Kayaking permitted along bayside only. No ocean Kayaking.
- Launches located at A15 & A21.
- A21 launch is for unloading only. No parking.

## PROHIBITED



# FACILITIES & SERVICES



Island Beach State Park  
NJDEP

**EMERGENCY Dial 911**

Information 732-793-0506  
Park Police 877-WARN-DEP



## MEDICAL SERVICES

- IBSP First Aid at Swimming Area 1 & Swimming Area 2
- TriBoro First Aid (732) 830-3236
- Hospital - Community Medical Center (732) 557-8000



## NATURE CENTER

- Located 7 miles south of park entrance
- Live animals, fish tanks, historic and ecological displays
- Open 10 a.m. - 4 p.m. everyday in the summer!



## ACCESSIBILITY

- Beach wheelchairs are available for persons with disabilities at Swimming Areas 1 & Swimming Area 2 while Lifeguards are present
- NJ Residents with a disability can obtain a FREE disability pass. Go to [njparksandforests.org](http://njparksandforests.org) for information.
- Qualified service animals are welcomed but must be leashed at all times.



## SWIMMING AREAS

***No swimming on unguarded beaches***

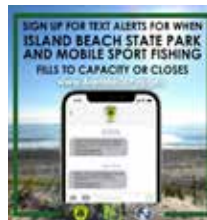
- Swimming Area #1
  - Bath House, Outside Showers, Food Court, Tiki Bar, Nature Programs.
- Swimming Area #2
- Bath house, Outside Showers, Food Court
- Southern Swimming Area A7
  - Bathrooms



Lost & Found  
Located at Park Office – 732-793-0506



**SCAN TO VIEW**



**SCAN TO VIEW**



# THINGS TO DO

## Island Beach Nature Programs

# LET US GUIDE YOU!

We are excited to invite you on one of our exciting guided programs at IBSP! These programs are designed to inspire, educate and most of all foster an appreciation for the park.

## HIGHLIGHTS

### Kayaking

Join Park Naturalists on one of our many different kayaking trips: Clamming by kayak, EcoTour, Sunset Paddle, and more!

### Surf Fishing

Learn the basics of surf fishing at our Beginner Surf Fishing Clinic! All bait and equipment is provided!

### History Hikes

Take a casual walk around the park and learn about the area's rich history. Topics include US Life Saving Service, Judges Shack, Reeds Hotel and more!

### Surfing Lessons

Learn how to surf at IBSP! Lessons are Tuesdays and Thursdays at low tide!



**Contact Us**  
1 (732) 793-1315



**More Information**  
[www.islandbeachnatureprograms.org](http://www.islandbeachnatureprograms.org)

**SUMMER  
2024**

**ASK US ABOUT  
KIDS CAMPS!**

IBSP JUNIOR NATURALIST  
SURF IBSP

# THINGS TO DO



## KAYAKING

Kayaking opportunities are endless in the Sedge Islands Marine conservation Zone. Launches are located at parking lots A15 & A21. Click QR Code for Sedge Map.



## FISHING

One of the most popular things to do at IBSP! Permitted 24 hours a day, 365 days per year, this sport is sure to create lasting memories. Click QR Code for rules & regs.



## HIKING

IBSP has a total of 8 trails, each under one mile. Visitors may also choose to explore the 10 miles of pure white sand beaches. Click QR code for trails map.



## CLAMMING

Recreational clamming is permitted anywhere within the Sedge Islands Marine Conservation Zone on any day except Sunday. Click QR code for clamming regs and license info.



## BIRDING

IBSP is a popular stopover on the Atlantic Flyway, a major north-south bird migration route. IBSP hosts an Incredible diversity of birds each year and is a hotspot for local birders. Click QR code for Audubon Society.



## PHOTOGRAPHY

Recreational photography opportunities are endless at IBSP. From historic shacks to stunning landscapes, there's no shortage of amazing locations to capture your photos. Click QR code for IBSP Photos.



# WATCH LIVE!

## Two Cameras Live Stream Island Beach State Park to the World

Join the thousands of people who tune in for a virtual look at Island Beach State Park. The beach camera, mounted at Swimming Area 1, shows viewers current beach conditions. It is used daily by surfers, fisherman, and beach goers. The Pete McLain Osprey Camera provides a live stream of the osprey nest located near the Interpretive Center. The cameras require regular maintenance and can be quite costly. Please consider making a tax deductible donation to the Friends of IBSP to help keep the camera running.

### VIEW OUR CAMERAS



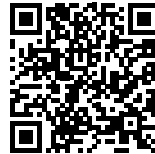
[www.friendsofibsp.org/live-cams/oba1-beach-cam/](http://www.friendsofibsp.org/live-cams/oba1-beach-cam/)

#### Beach Camera:



[www.friendsofibsp.org/live-cams/osprey-cam/](http://www.friendsofibsp.org/live-cams/osprey-cam/)

#### Osprey Camera:



OPEN 4:30AM · 7 DAYS A WEEK  
807 S.W. CENTRAL AVENUE · SEASIDE PARK, NJ  
732-793-2708 · REST. 732-830-9415

[WWW.BETTY-N-NICKS.COM](http://WWW.BETTY-N-NICKS.COM)

### SERVING OCEAN COUNTY FOR OVER 50 YEARS

FISHING · CRABBING · 4 WHEEL DRIVE INFO CENTER · FULL BREAKFAST & LUNCH  
TEXAS CHILI · CLAM CHOWDER · DAILY BREAKFAST/LUNCH SPECIALS

# Become A Volunteer



**Collecting  
Gate Donations**

**Beach Grass  
Planting**



**Trail Maintenance**

**Events**



**Contact “[info@friendsofislandbeach.org](mailto:info@friendsofislandbeach.org)” to learn more.**



MARINE SCIENCE CAMP

NEW LOGIC

# K-8 (TEEN)

SEINING • SIEVING • WATER QUALITY SAMPLING • PLANT AND ANIMAL IDENTIFICATION • ENVIRONMENTAL AWARENESS  
UNDERWATER CAM • MARINE MAMMAL RESCUE DRILLS

For Registration, Information, Locations & Online Store visit  
[www.MarineScienceCamp.com](http://www.MarineScienceCamp.com)

Contact: 732-250-8124 or [Hello@marinesciencecamp.com](mailto>Hello@marinesciencecamp.com)



**THE Dock Outfitters**

732-830-8171 (Boats)    732-830-5611 (Waverunners)

**Bait & Tackle Shop**

**WATERSIDE CAFE - DOCK & DINE**

Crabbing Supplies • Free Crabbing/Fishing Pier

**WAVERUNNER RENTALS • BOAT RENTALS**

5 ROUTE 35 SOUTH • SEASIDE HEIGHTS, NJ 08751

[www.TheDockOutfitters.com](http://www.TheDockOutfitters.com)

732-793-7545

**CORNERSTONE**  
WINE & LIQUOR

1401 Grand Central Ave, Lavallette NJ 08753  
(Corner of Brooklyn Ave & Rt. 35 North)

This ad entitles you to

**15% OFF** your next cash & carry purchase

**10% OFF WITH CREDIT CARD**  
(EXCLUDES TABACCO PRODUCTS & ICE)

[cornerstonewineandliquors.com](http://cornerstonewineandliquors.com) • [cornerstonewines@gmail.com](mailto:cornerstonewines@gmail.com)

**Blue Front**  
Liquor Store

*Large Selection:*

- Wine
- Mixers

*- Coolers*

- Beer
- Kegs
- Ice

312 SE Central Ave, Seaside Park, NJ 08752  
(732) 830-4551

**Gertude M. Stefanik, Inc.**  
Realtors®



1115 North West Central Avenue  
Seaside Park, NJ 08752  
Tel: 732-793-0812  
Fax: 732-793-2767

[www.stefanikrealtors.com](http://www.stefanikrealtors.com)

Stop by **SurfTaco** and enjoy some  
**Good Food... Good People... Good Vibe**

**FRESH**

Tacos • Burritos • Wraps • Quesadillas  
Smoothies • Salads & More

**CALL US  
FOR  
TAKE-OUT**

**SurfTaco**  
Coastal Cuisine

**ONE BLOCK  
FROM THE  
BEACH!**

SEASIDE PARK  
212 SE Central • Seaside Park, NJ

732.830.2111 • [www.surftaco.com](http://www.surftaco.com)

**TRY OUR NEW SHOP RIGHT NEXT DOOR TO SURF TACO**

**Beach Culture**

Specialty Coffee • Fruit Smoothies • Acai Bowls

**Island Beach  
MOTOR LODGE**

24th and Central Avenue  
South Seaside Park, N.J. 08752  
(732) 793-5400  
FAX (732) 793-3380

Private Beach • Heated Pool  
Air Conditioning • Efficiency Apartments



**Open Year Round  
WHITE OAK  
LIQUOR SHOP**

LIQUOR DOMESTIC & IMPORTED  
BEERS & WINES  
ICE - KEGS  
WINE COOLERS-MIXERS

200 SE Central Avenue  
Seaside Park, NJ 08752  
Tel: 732-793-0024 Fax: 732-793-0179

"Your Fine Wine Resource" Brands Sold Here  
Buy a Case of Wine, get 15% off



**Sailboat Rides**

Day, Sunset & Evening Sails  
On Barnegat Bay



**SEASIDE SAILING**

732-830-9285 • [www.seasidesailing.com](http://www.seasidesailing.com)

Feel free to bring your own food, wine or beer.

**SEASIDE  
TIKI TOURS**

SIT BACK AND ENJOY THE SEA-NIC VIEW



**BOOK NOW**

[WWW.SEASIDETIKITOURS.COM](http://WWW.SEASIDETIKITOURS.COM)

FEEL FREE TO BRING YOUR  
OWN FOOD AND DRINKS



# may day

S P R I N G F E S T I V A L

*May 4th*

10:00AM - 3:00PM

ISLAND BEACH STATE  
PARK SWIMMING AREA 1

*rain date may 5th*

**FOOD TRUCKS &  
CRAFT AND  
PET VENDORS**

*dogs on leash  
invited to attend*



**FRIENDS**  
OF  
ISLAND BEACH  
STATE PARK

*\$8 suggested donation*





*Save the Date!*

**SATURDAY  
MAY 18**

**SEASIDE PARK**

*Island Beach  
State Park*

**SUNDAY  
MAY 19**

**SANDY HOOK**

*NJS90  
Headquarters*

**11 AM - 3 PM, BOTH DAYS RAIN OR SHINE**

**FREE ADMISSION**

LEARN ABOUT MARINE LIFE, ENERGY CONSERVATION AND WHAT YOU CAN DO TO CARE FOR OUR COASTLINE

Presented by New Jersey Natural Gas,  
New Jersey Sea Grant Consortium,  
Gateway National Recreation Area - Sandy Hook,  
Asbury Park Press, NOAA and  
NJDEP Division of Parks and Forestry,  
Island Beach State Park



**Crossroads  
Realty**

[www.CrossroadsRealtyNJ.com](http://www.CrossroadsRealtyNJ.com)

**732-244-4900**



## Our Services

- Summer & Vacation Rentals
- Residential Real Estate
- Waterfront & Distinctive Properties
- Active Adult Communities
- Commercial Real Estate
- Relocation services
- 10 Offices & Teams to serve you
- Full Service Agency

**Serving Ocean County for 58 Years**



**Stop by our Toms River Executive Office or our  
Barrier Island Office on your way to the beach!**

# RENEW YOUR SPIRIT



## Summer Solstice & Full Moon Party

*Celebrate the Summer Solstice at IBSP*

06 . 21 . 2024

4:00-9:30

*Island Beach State Park  
Swimming Area 2*

Live local band  
Fish & Whistle



Summer Solstice is one of the most powerful times of the year.

Join IBSP Naturalists and volunteers from Sanctuary Yoga and Meditation as we harness the energy from the longest day of the year and create inner peace, stillness and balance.

*\*Events provided are subject to change and are dependent on weather conditions.*



# Surf IBSP

## SURF CAMP

IBSP NATURALISTS AND AVID SURFERS TAKE YOU ON A WILD RIDE FILLED WITH GAMES, LESSONS, STEWARDSHIP AND MOST OF ALL, LOTS OF TIME IN THE WATER!

## TALK TO US

732-793-1315

[kelly.scott@dep.nj.gov](mailto:kelly.scott@dep.nj.gov)

[islandbeachnatureprograms.org](http://islandbeachnatureprograms.org)



# Barrier Island Classic **SURF** **CONTEST**

*Brought to you by the Friends of IBSP &  
The Barrier Island Board Riders*

**August 13th**

**10:00-3:00**

**No Wave Days:**

**August 14th & 15th**

**\$40 registration fee**

**How to Enter**



**facebook.com/  
barrierislandclassic**



**at Island Beach State Park**



# BEACH PLUM FESTIVAL

BEACH PLUM JELLY & ICE CREAM  
FOOD · MUSIC · CRAFTERS · CHILDREN'S GAMES  
ENVIRONMENTAL & NON-PROFIT EXHIBITS

## SEPTEMBER 8<sup>TH</sup>

### 9AM - 4PM

OCEAN BEACH BATHING AREA 1



FRIENDS  
of  
ISLAND BEACH  
STATE PARK

### \$8<sup>00</sup>

SUGGESTED DONATION

RAIN OR SHINE

## FAMILY FUN DAY



PLEASE VISIT [WWW.FRIENDSOFISLANDBEACH.ORG](http://WWW.FRIENDSOFISLANDBEACH.ORG) FOR MORE INFORMATION

## WHITE OAK MARKET

Est. 1913

### The "Parks" Market

**OPEN ALL YEAR**

Proudly Serving Boar's Head



Boar's Head

Subs/Panini/Wraps

Chicken Fingers/Wings/Fries/O-Rings

Homemade Soup Daily

Heat 'n' Eat Meals To Go

*Baked Goods*

*Fresh Coffee*

*Produce*

*Catering for all occasions*

**206 SE Central Ave., Seaside Park 732-793-0022**





O  
K  
T  
O  
B  
E  
R  
F  
E  
S  
T



OCTOBER 5TH

*rain date october 6th*

**FOOD, BEER,  
MUSIC, VENDORS,  
PET COSTUME PARADE  
AND CONTEST**

*dogs on leash invited to attend*

**ISLAND BEACH STATE PARK  
SWIMMING AREA 1**



*\$8 suggested donation*



Childers

Sotheby's

INTERNATIONAL REALTY

THE VILLANO GROUP

1505 NW Central Avenue

Seaside Park, NJ 08752

Office: 732-793-4663 Cell: 732-470-4225

*Outstanding Personalized Service with Worldwide Reach*



Sherry Villano



**EVERY DAY, ALL DAY LONG, WE ARE OUT  
EXPLORING, HIKING, FISHING, BIRDING,  
CLAMMING, AND MORE!**

[islandbeachnatureprograms.org](http://islandbeachnatureprograms.org)

**JUNIOR  
NATURALIST  
CAMP**

**AGES 6-12**

**TALK TO US**

732-798-1315

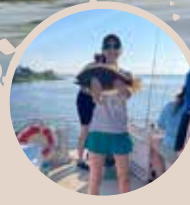
[kelly.scott@dep.nj.gov](mailto:kelly.scott@dep.nj.gov)

[islandbeachnatureprograms.org](http://islandbeachnatureprograms.org)

# Explore Sedge Island

Natural Resource Education Center

WITH US



Dive into the salt marshes of New Jersey through an immersive experience with NJDEP Fish & Wildlife.

The Sedge Island Natural Resource Education Center brings conservation, the history of Barnegat Bay and salt marsh ecology to you. Programs connect you to the local flora and fauna cultivating a deeper appreciation of New Jersey's natural resources where no two days are ever the same.

This year NJDEP Fish & Wildlife will be offering a variety of programs for adults. These programs include but aren't limited to:

*Kayak Fishing Bay to Bowl  
Sunset Paint and Sippin' Oysters and Clams  
Jewelry Making Photography  
Kayak Tours, Clamming, Fishing and more!*

Workshop information will be posted in May 2024. For more information scan the QR Code or email Karen at karen.byrne@dep.nj.gov.



## SEASIDE PARK SERVICE CENTER

**Auto repairs 7 days 7a.m. til 9p.m.  
24 hour towing - flatbed**

**(732) 793-6260 Fax: (732) 793-4338**

**912 NE Central Avenue and "J" Street  
Seaside Park, NJ**

**Pat Barry  
Owner**





*Robby Fuggi*



COME RELAX AND ENJOY THE BEAUTY THAT IS



*Carolyne Roselli*



*Karen Riley*



Jessica Viggiano



Jolie Johnson



Cindy Nelson

# *Island Beach State Park*





islandbeachnatureprograms.org

# LET'S GO KAYAKING!

The Sedge Islands Marine Conservation Zone (SIMCZ) is located along the southwestern end of IBSP. This pristine natural area has a variety of shallow, narrow channels carving the saltmarsh into a series of islands that make it perfect for exploring by kayak. Join us on a guided paddle or access the area on your own at parking lots A15 and A21. Guided paddles include: Sedge Islands Kayak Ecotour, Sunset paddle, Clamming by kayak, and more!

\*Strong winds and swift tidal currents can make paddling challenging. Please be cautious. Maps are available at the gatehouse, office and nature center.

## Yakkity Yaks Kayak Rentals



- Kayak and Paddleboard Rentals & Sales
- Hourly, Daily & Multi-Day Rentals Available
- Free Delivery - Your Home, Bay or Beach
- From Mantoloking to Seaside Park
- You Tell us Where and We'll Be There!
- Call about our Huge Annual Used Kayak Sale
- Authorized Old Town and Ocean Kayak Dealer

**732-830-1835**

[www.yakskayakrental.com](http://www.yakskayakrental.com)

[yaksrentals@gmail.com](mailto:yaksrentals@gmail.com)

908 NE Central Ave, Seaside Park NJ

# GRUMPYS TACKLE EVERYTHING SURFCASTING!

ALSO INSHORE & OFFSHORE TACKLE!

**Abu Garcia**

**ODM RODS**  
*The Ultimate Experience*

**ST. CROIX**

**DAIWA**



**PENN**

**Black Hole USA**



**SHIMANO**

**\$ VAN STAAL**

**STORMR**

Custom Rod Building and Reel Repair!  
Full line of rod components and reel parts!

## Grumpys

### Bait and Tackle

Open 7 Days  
4:30 AM - 8:00 PM

906 NE Central Ave  
Seaside Park, NJ 08752

**(732) 830 - 1900**

Check out our website  
for fishing reports and  
online shopping!  
[www.grumpystackle.com](http://www.grumpystackle.com)



Check Us Out On:



Come and meet our clams,  
oysters, and bay scallops  
in their upweller nurseries  
on and near the  
Barnegat Bay Island

RCTB has a total of  
12 upwellers located around  
the Barnegat Bay Watershed



Visit our Jenkinson's  
Aquarium Exhibit



IBSP Marina  
24th Street Bayside  
MONDAY • 12:00 noon  
THURSDAY • 7:00 pm

Traders Cove Marina Park  
Mantoloking Road  
THURSDAY • 10:00 am

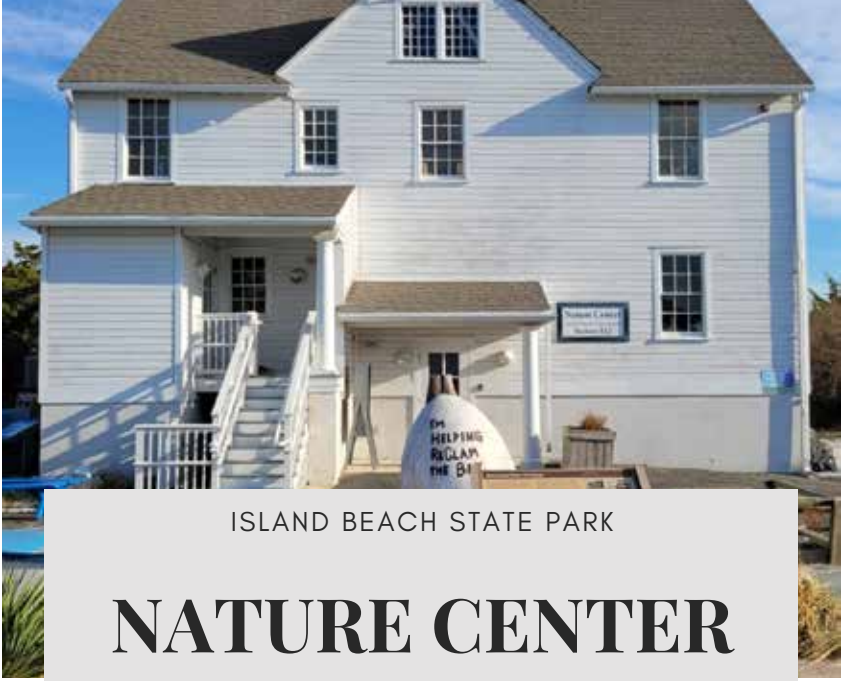
Mantoloking Yacht Club  
1228 Bay Avenue  
FRIDAY • 10:00 am

*Subject to weather conditions*



For more information on  
our program and to  
use our interactive map,  
visit our website at  
[RECLAMTHEBAY.org](http://RECLAMTHEBAY.org)



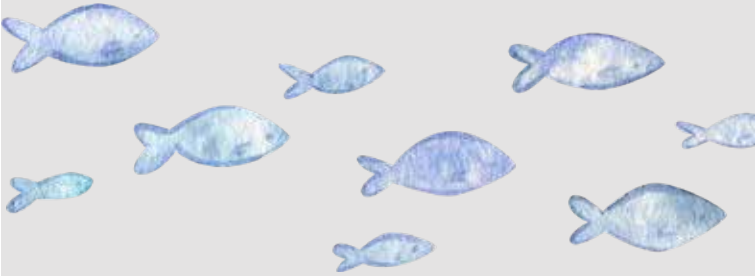


ISLAND BEACH STATE PARK

# NATURE CENTER

**LIVE ANIMALS! EDUCATIONAL  
EXHIBITS! BEAUTIFUL VIEWS! & MORE**

**SUMMER HOURS | 10 A.M. - 4 P.M.  
DAILY  
OFFSEASON HOURS | PLEASE CALL  
732-793-1315**



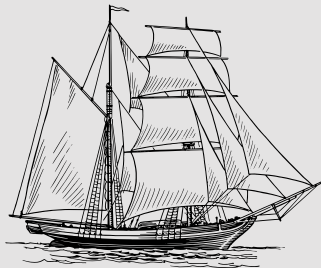


ISLAND BEACH STATE PARK

# INTERPRETIVE CENTER

**HISTORICAL TIMELINE, SHIPWRECK  
ARTIFACTS, MARITIME HISTORY  
& SO MUCH MORE**

**SUMMER HOURS | 10 A.M. - 4 P.M.  
DAILY  
OFFSEASON HOURS | PLEASE CALL  
732-793-1315**





# B&B Department Stores North

We are your destination for all beach accessories & swimwear!

Womens, Mens, Juniors, Kids & more!

@bnb\_departmentstore  
BNBDEPARTMENTSTORE.COM

**Come Visit Us!**

**OCEAN CITY**

820 ASBURY AVE

**BEACH HAVEN**

835 N BAY AVE

**SHIP BOTTOM**

901 CENTRAL AVE

**SEASIDE PARK**

500 SE CENTRAL AVE

**LAVALLETTE**

703 GRAND CENTRAL AVE

puravida  
LIVE & FREE



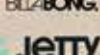
SoftLife



havaianas



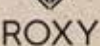
sanuk



RIP CURL



SAND CLOUD



***"Bringing Sexy Food Back"***



**www.ChefMikesABG.com**

**24th & Central Avenue • South Seaside Park**

**• 732.854.1588 •**

**SPICY**  
FOOD & SPIRITS

*Best Margaritas on the Shore!*

NIGHTLY ENTERTAINMENT  
FRESH GUACAMOLE  
CHILDREN'S MENU

**732.793.4777**

WWW.SPICYCANTINA.COM 

# HT

SERVICES  
STOCKTON, NJ

---

☎ 908-566-6906  
✉ HTservicesnj@gmail.com  
www.HTservicesnj.com

---

EXCAVATION, FENCING, DRIVEWAYS,  
DRAINAGE, LAND CLEARING AND MORE

# FEATURED PHOTOGRAPHER

I was born February of 1951 and grew up in Hamilton Township, New Jersey. I graduated from Mercer County Community College and then went to work for the State Government. This is where I became interested in photography. I moved to the Jersey shore in 1977 in the town of South Seaside Park, a good spot to pursue my interest in photography.

I've been enjoying the art of photography for over fifty years. I was a senior photographer for Eastern Surf Magazine, a contributing photographer for Surfer Magazine, and I was inducted in the New Jersey Hall of Fame in 2015. I shoot a wide variety of subjects from surfing, skateboarding, wind sailing, sailing to wildlife and I'm always discovering new areas of interest. The endless possibilities of this craft encourage me to constantly expand my abilities and knowledge. I love

shooting fast moving subjects either on film or catching the moment on a memory card. Surfing... the action is never the same at any given time. Wildlife photography... you never know what to expect there are always surprises. My natural impulse is the desire to catch the action through pictures.



# RAY HALLGREEN





# SHOP LOCAL

*Support local businesses on the Jersey Shore!*

## Breakfast & Lunch

Betty & Nick's

Park Bakery

White Oak Market

Dock Outfitters

807 SW Central Ave, Seaside Park

1031, 1047 SE Central Ave, Seaside Park

206 SE Central Ave, Seaside Park

5 NJ-35, Seaside Heights

## Bar & Restaurants

Berkeley Cut Steakhouse

Bum Rogers

Surf Taco

Chef Mike's

2204 Central Ave, Seaside Park

2207 Central Ave, Seaside Park

212 NE Central, Seaside Park

10 24th, Central Ave, Seaside Park

## Bait & Tackle

Betty & Nick's

Dock Outfitters

Grumpy's

807 SW Central Ave, Seaside Park

5 Route 35 South, Seaside Heights

906 NE Central Ave, Seaside Park

## General Store

Shore and More

B&B Department Store

5th Ave and Central Ave, Seaside Park

500 SE Central Ave, Seaside Park

## Hotels / Motels

Windjammer

Island Beach Motor Lodge

100 SE Central Ave, Seaside Park

24th & Central Ave, South Seaside Park

## LET'S BE FRIENDS

To become a member of **Friends of Island Beach**

visit our website [www.friendsofisp.org](http://www.friendsofisp.org)

email at [info@friendsofislandbeach.org](mailto:info@friendsofislandbeach.org)



- Photo by Ray Yeager



# FRIENDS OF ISLAND BEACH STATE PARK



The Friends of Island Beach State Park is a non-profit volunteer run organization. Our mission is to further public appreciation and stewardship of the park. Our members come from a wide range of backgrounds, but have in common a love for this beautiful state Park. Together, we accomplished so much this past year!

- Built new educational displays, a pergola, and entrance awning for the Nature and Interpretive Centers.
- Maintained trails and built boardwalks.
- Donated much needed equipment to enhance visitor experience in the Park.
- Partnered with POAC to offer a day of fun and surf to the autism community.
- Hosted wonderful events including a New Years Day Walk, Lecture Series, Festivals, Junior Surf Tournament, and more!
- Raised thousands of dollars to support the Park and put in over 5000 volunteer hours!

## Partners



**Barnegat Bay Partnership**  
732-255-0472  
[www.barnegatbaypartnership.org](http://www.barnegatbaypartnership.org)



**Clean Ocean Action**  
732-872-0111  
[www.cleanoceanaction.org](http://www.cleanoceanaction.org)



**Conserve Wildlife Foundation**  
609-292-1276  
[www.ConserveWildlifeNJ.org](http://www.ConserveWildlifeNJ.org)



**New Jersey Beach Buggy Association**  
[www.njbba.org](http://www.njbba.org)



**ReClam the Bay**  
[www.reclamthebay.org](http://www.reclamthebay.org)



**Save Barnegat Bay**  
732-830-3600  
[www.savebarnegatbay.org](http://www.savebarnegatbay.org)



**New Jersey  
Beach Buggy Association**  
P.O. Box 511, Seaside Park, NJ 08752  
[www.NJBBA.org](http://www.NJBBA.org)  
Fighting for  
Beach Access & Conservation  
Since 1954

**Great Food, Cocktails, Entertainment!**

# RED FOX

ISLAND  
BEACH  
STATE PARK

BEACH BAR  
& GRILL

**Visit us at: [redfoxbeachbar.com](http://redfoxbeachbar.com)**

**RAW BAR | BURGERS | SEAFOOD**



Located in Island Beach State Park at Swimming Area #1

## ISLANDER FOOD COURT

Burgers | Salads | Ice Cream | Beach Shop



**Visit us at: [islanderfoodcourt.com](http://islanderfoodcourt.com)**

Located in Island Beach State Park – Swimming Area #1 and #2

# HAPPY 125TH ANNIVERSARY SEASIDE PARK



THE HOTTEST NEW STEAKHOUSE RESTAURANT IN SEASIDE PARK, NJ IS BERKELEY CUT STEAKHOUSE. WITH AMAZING FOOD, A BEAUTIFUL DINING SPACE AND ATTENTIVE SERVICE, YOU'RE SURE TO LOVE OUR LOCAL RESTAURANT. OUR GOAL IS TO BE YOUR PREMIER DESTINATION FOR LUXURY DINING.

WE ARE FAMILY OWNED AND OPERATED, LOCALLY OWNED AND OPERATED, FULLY LICENSED AND INSURED AND WE HAVE OVER 50 YEARS OF EXPERIENCE IN THE RESTAURANT INDUSTRY. ALL OF THIS MAKES US WELL-EQUIPPED TO SERVE YOU.

THE NEXT TIME YOU'RE LOOKING FOR AN UPSCALE RESTAURANT TO HOST A BUSINESS MEETING, TO BRING YOUR DATE, OR HAVE A CRAFT COCKTAIL OR GLASS OF FINE WINE, WE HOPE YOU'LL THINK OF US. CALL TODAY TO MAKE A RESERVATION.

2204 CENTRAL AVENUE 732-250-4220

ISLAND BEACH FISH COMPANY IS A CASUAL INDOOR AND OUTDOOR DINING FACILITY WITH THREE BARS. WE ARE ALSO HOME TO THE FISH MARKET, WHERE WE ARE BRINGING YOU ALL TIME FAVORITES BACK, FRESH SEAFOOD, COOKED SEAFOOD TO GO, LIVE LOBSTERS AND MORE. LOCATED AT THE SITE OF THE HISTORIC ARTS SAND BAR, IBFC IS A NEW FAVORITE AT THE JERSEY SHORE.  
2102 CENTRAL AVENUE  
732-250-4376



BUM ROGERS, SPANNING FIVE DECADES, HAS BEEN A UNIQUE, SPECIALTY HOUSE RESTAURANT AND THE COMMUNAL, SPIRIT-LIFTING WATERING HOLE OF THE INDIGENOUS AND MIGRATING YOUNG AND YOUNG-AT-HEART. WE, THE BUM ROGERS FAMILY AND STAFF, CONTINUE TO BE DEDICATED TO THE PROPOSITION THAT YOU CAME TO THIS PLACE TO HAVE A GOOD TIME, EAT HEARTILY, AND DEPART FEELING BETTER THAN BEFORE. BUM'S FEATURES THE SHORE'S BEST LIVE MUSIC ALL YEAR ROUND AND HAS BEEN A NINE TIME WINNER OF THE READERS CHOICE AWARD FOR BEST SEAFOOD.

2207 CENTRAL AVENUE 732-830-2770

THE BEST OF THE BEST, LOCATED IN SEASIDE PARK, NJ





*Access Shore Luxury*

**Sales • Summer Rentals**

*Visit our website at [BirchRE.com](http://BirchRE.com)*



*Proudly Serving the Jersey Shore for 50 years!*

**Visit Us Today at One of Our Conveniently Located Offices:**

**Ortley Beach**  
732-830-3333  
1901 NJ-35 #4  
Seaside Heights, NJ

**Seaside Park**  
732-793-6074  
1208 SE Central Ave.  
Seaside Park, NJ



*BirchRE.com*